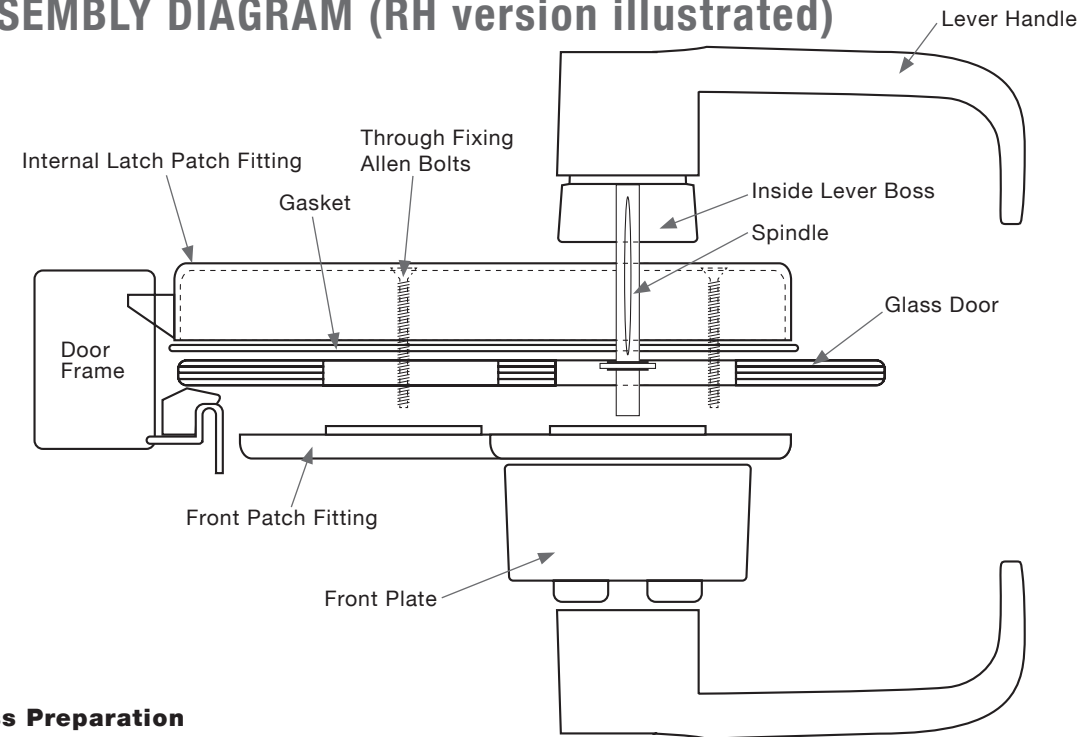
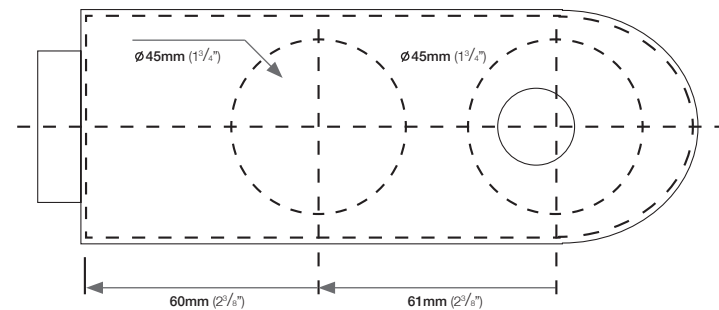


## ASSEMBLY DIAGRAM (RH version illustrated)



### Glass Preparation



# CODELOCKS

## Installation Instructions Electronic Digital Patch Lock for Glass Doors

II/4kGD-0910



# CODELOCKS

control + convenience

CODELOCKS INC  
2930 - B College Avenue  
Costa Mesa  
CA 92626  
USA

Tel +1 714 979 2900  
Fax +1 714 979 2902  
sales@codelocks.us

CODELOCKS LTD  
Castle Industrial Park  
Kiln Road, Newbury  
Berkshire RG14 2EZ  
UNITED KINGDOM

Tel + 44 (0) 1635 239645  
Fax + 44 (0) 1635 239644  
sales@codelocks.co.uk

[www.codelocks.com](http://www.codelocks.com)

## Box Contents

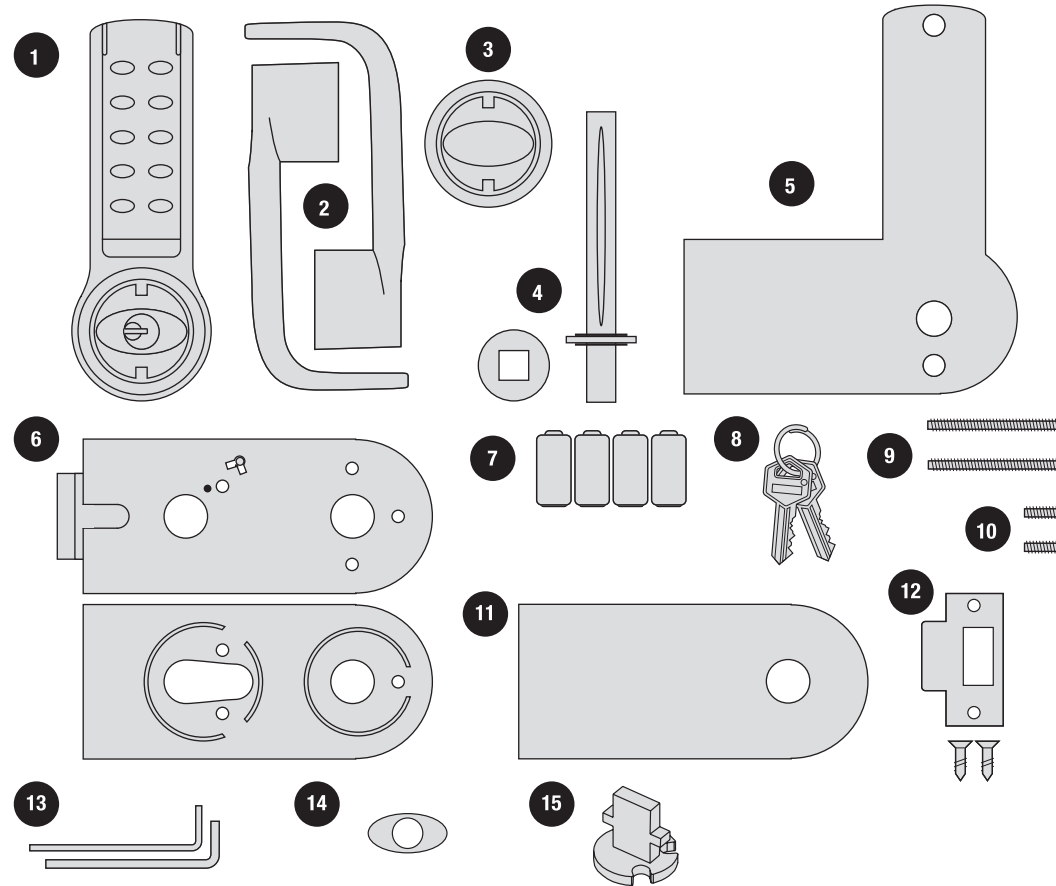
Check the contents of the box are correct

1	Front Plate
2	Lever Handles x 2
3	Inside Lever Boss
4	Spindle + Spacer
5	Front Patch Fitting (LH or RH)
6	2 Piece Internal Latch Patch fitting (with Gasket)
7	Batteries x 4 'N cell'
8	Front Plate Cylinder Keys
9	Through Fixing Allen bolts x 2
10	Patch Fixing Allen bolts x 2 (short)
11	Internal Patch Steel Cover Plate
12	Strike Plate
13	Allen Keys
14	Front Plate Cylinder Cover
15	Classroom Function Tailpiece

This box should also contain Programming and Operating Instructions.

## Tools Required

- Philips screwdriver



## INSTALLATION OF GLASS DOOR LOCK

**You should familiarise yourself with the lock and its operation before attempting to fit. Locks are supplied as either RH or LH versions check you have the correct product to suit the hand of your door. Illustration page 5 shows RH version.**

1. With digital lock face down on a bench remove the transit strip from the rear of the lock by removing the two transit screws.

2. Install batteries into lock ensuring that the positive and negative ends are correctly orientated.

3. Ensure that the clutch below the battery holder is in the correct position with orange and black cable exiting the top left of the clutch. If not rotate into the correct position.

4. Fit the front patch fitting to the frontplate with the two short transit bolts and tighten.

**Note - ensure cables are not trapped.**

5. Test the factory master code by pressing 1234. The blue light should signal to show a correct code. The red light will signal after 5 seconds to show the code operation period has expired.

6. Fit the lever handle to the frontplate boss according to the hand of your door and secure with grub screw.

7. Remove the steel coverplate from the latch patch fitting by unthreading the Nylon nut.

**8. Ensure that the latch patch fitting is handed to suit your door. The hand can be changed by a combination of reversing the latch head (via the securing screw) and/or by turning the latch patch fitting 180 degrees.**

**9. The spindle supplied is suitable for glass doors up to 15mm (9/16") thick. For doors thicker than 15mm (9/16") please install the spacer piece provided onto the long end of the spindle.**

Now take the internal latch patch fitting and pass

the spindle through the latch follower with the short end facing the code side. Push the spindle through until the washer rests against the patch lock.

10. Place the thin plastic gasket on the latch patch fitting so it is seated against the glass door and latch when assembled.

11. Holding latch patch fitting in place take the frontplate assembly and fit over spindle.

12. Using the 2 through fixing bolts from the latch side secure the code side and latch side together, ensuring the lock is aligned vertically and horizontally with the door.

13. Refit the steel coverplate to the latch patch fitting and secure with Nylon nut.

14. Take the internal lever boss and fit, pushing firmly onto spindle. Secure with grub screw.

15. Fit internal lever onto boss according to hand of door and secure with grub screw.

### Operation Check

A) Enter the mastercode wait for the blue light and depress the lever which should retract the latch. After the red light depress the lever once more which should not retract the latch.

B) Depress the internal lever which should retract the latch.

If A) or B) do not work please check installation from step 12 and that lock has not been set in passage function by key (see programming instructions).

**NOW - Change factory set Mastercode (see programming instructions).**